

# Living Container

Part No: SDS01



GRUPPO CAVALIERI SRL



## General Description

The flat-pack containers will be produced as high quality and fast erected modular units through advanced solutions and technologies with total quality concept based on unlimited customer satisfaction; unlimited support services at every level. All modules will have a minimum life expectancy of 25 years.



The architectural and structural design of the containers are carried by our expert Technical Staff, by using Autocad and SAP 2000 drawing and structural analysis programs.

Electrical, mechanical, plumbing and thermal performance design and material / equipment selection will be in accordance with Energy Efficiency Rules and Regulations.

Containers can be delivered as flat-pack type can obtain a greater rationalization of the transportation cost. It is reduced as a sandwich, made up from base and roof, wall panels, door and windows and accessories connected by suitable metallic spacers for a quick assembly on site.

As an advantage of their particular features, modules, which may be disassembled, carried and erected elsewhere several times, are the best to face emergency conditions or situations requiring temporary solutions. Modules may also be coupled from larger and more equipped complexes.

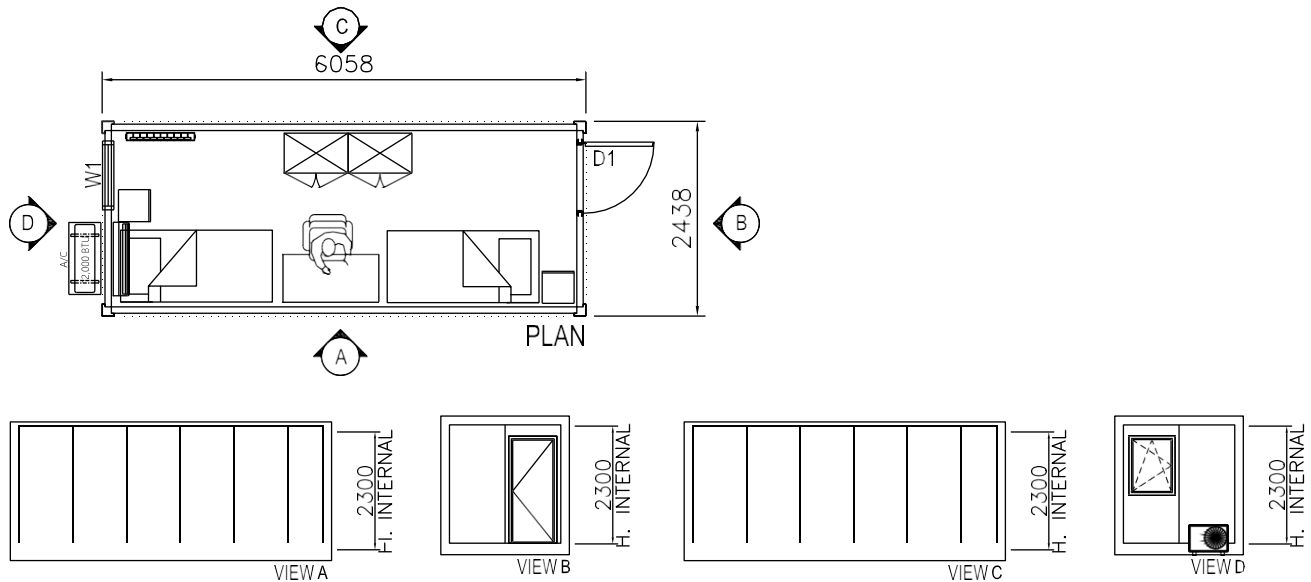
Materials used will be suitable for use in extreme weather conditions, including high humidity; great seasonal and diurnal temperature variations and large volumes of wind drive sand.

# Living Container

Part No: SDS01



GRUPPO CAVALIERI SRL



## Technical Specifications:

- 20 ft Living Container
- Product operation manual, product safety manual and product maintenance manual
- Fire rated external walls
- Painted and galvanized steel chassis, roof and structural columns
- Energy efficiency insulation for roof, walls and chassis
- Anti-slip PVC floor covering
- Painted and galvanized insulated steel door
- Windows with High Energy Saving Performance Glass
- Electrical Installation Materials IEC Standard (2 x LED Lights, 1 x Bulb Light, 1 x Switch, 3 x Sockets)
- Battery operated smoke and CO (carbon monoxide) detectors
- Cooling 12.000 Btu Air Conditioner
- Heating 2.500 W electrical wall heater
- Fire extinguisher dry chemical 6 kg.
- Furniture (2 x Beds including mattress and linens, 2 x bed side table, 1 x working desk with chair, 2 x wardrobes)



# Living Building



## General Description

The flat-pack containers will be produced as high quality and fast erected modular units through advanced solutions and technologies with total quality concept based on unlimited customer satisfaction; unlimited support services at every level. All modules will have a minimum life expectancy of 25 years.



The architectural and structural design of the containers are carried by our expert Technical Staff, by using Autocad and SAP 2000 drawing and structural analysis programs.

Electrical, mechanical, plumbing and thermal performance design and material / equipment selection will be in accordance with Energy Efficiency Rules and Regulations.

Containers can be delivered as flat-pack type can obtain a greater rationalization of the transportation cost. It is reduced as a sandwich, made up from base and roof, wall panels, door and windows and accessories connected by suitable metallic spacers for a quick assembly on site.

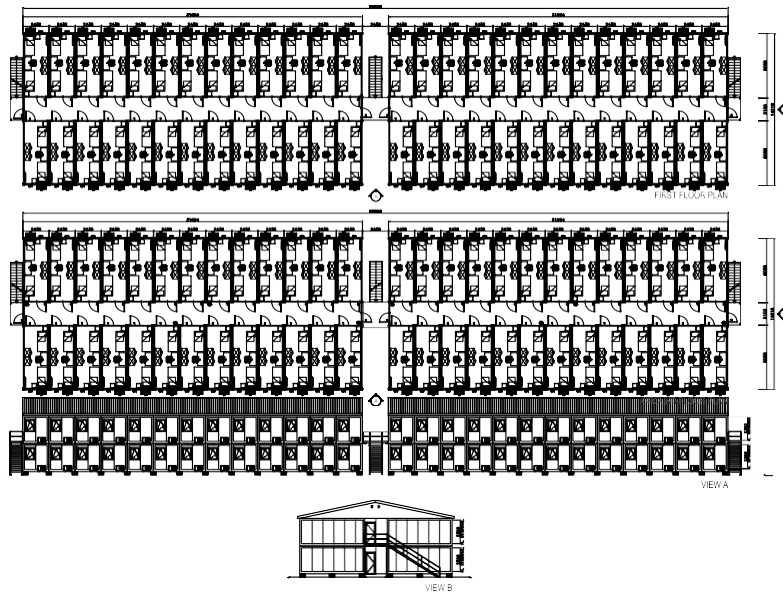
As an advantage of their particular features, modules, which may be disassembled, carried and erected elsewhere several times, are the best to face emergency conditions or situations requiring temporary solutions. Modules may also be coupled from larger and more equipped complexes.

Materials used will be suitable for use in extreme weather conditions, including high humidity; great seasonal and diurnal temperature variations and large volumes of wind drive sand.



# Living Building

GRUPPO CAVALIERI SRL



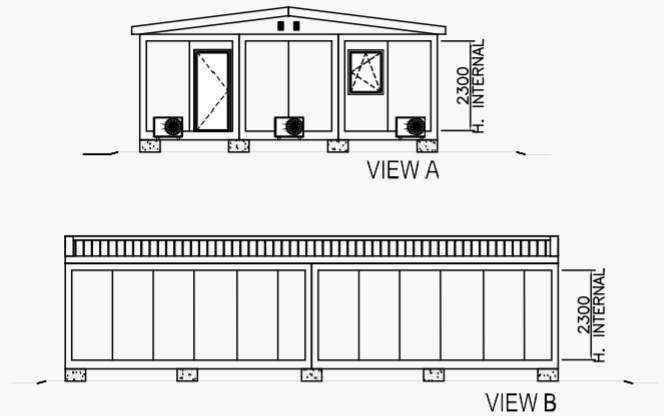
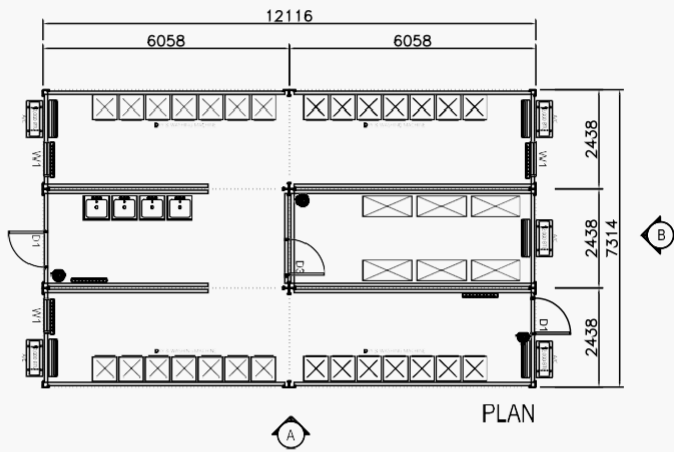
## Technical Specifications:

- 20 ft Living Container
- Product operation manual, product safety manual and product maintenance manual
- Fire rated external walls
- Painted and galvanized steel chassis, roof and structural columns
- Energy efficiency insulation for roof, walls and chassis
- Anti-slip PVC floor covering
- Painted and galvanized insulated steel door
- Windows with High Energy Saving Performance Glass
- Electrical Installation Materials IEC Standard (2 x LED Lights, 1 x Bulb Light, 1 x Switch, 3 x Sockets)
- Battery operated smoke and CO (carbon monoxide) detectors
- Cooling 12.000 Btu Air Conditioner
- Heating 2.500 W electrical wall heater
- Fire extinguisher dry chemical 6 kg.
- Furniture (2 x Beds including mattress and linens, 2 x bed side table, 1 x working desk with chair, 2 x wardrobes)



# Living Building

GRUPPO CAVALIERI SRL



## General Description

The flat-pack containers will be produced as high quality and fast erected modular units through advanced solutions and technologies with total quality concept based on unlimited customer satisfaction; unlimited support services at every level. All modules will have a minimum life expectancy of 25 years.



The architectural and structural design of the containers are carried by our expert Technical Staff, by using Autocad and SAP 2000 drawing and structural analysis programs.

Electrical, mechanical, plumbing and thermal performance design and material / equipment selection will be in accordance with Energy Efficiency Rules and Regulations.

Containers can be delivered as flat-pack type can obtain a greater rationalization of the transportation cost. It is reduced as a sandwich, made up from base and roof, wall panels, door and windows and accessories connected by suitable metallic spacers for a quick assembly on site.

As an advantage of their particular features, modules, which may be disassembled, carried and erected elsewhere several times, are the best to face emergency conditions or situations requiring temporary solutions. Modules may also be coupled from larger and more equipped complexes.

Materials used will be suitable for use in extreme weather conditions, including high humidity; great seasonal and diurnal temperature variations and large volumes of wind drive sand.

# Laundry Container

Part No: SDS02



GRUPPO CAVALIERI SRL



## Technical Specifications:

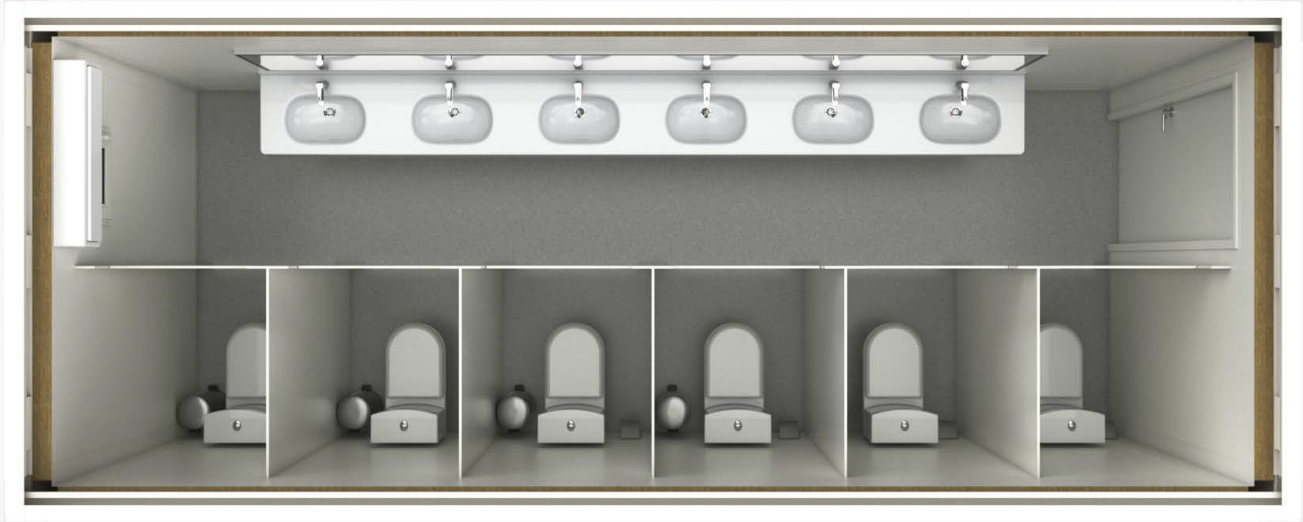
- 20 ft Laundry Container
- Product operation manual, product safety manual and product maintenance manual
- Fire rated external walls
- Painted and galvanized steel chassis, roof and structural columns
- Energy efficiency insulation for roof, walls and chassis
- Anti-slip PVC floor covering
- Painted and galvanized insulated steel door
- Windows with High Energy Saving Performance Glass
- Electrical Installation Materials IEC Standard (2 x LED Lights, 1 x Bulb Light, 1 x Switch, 7 x sockets)
- Battery operated smoke and CO (carbon monoxide) detectors
- Cooling 12.000 Btu Air Conditioner
- Heating 2.500 W electrical wall heater
- Fire extinguisher dry chemical 6 kg.
- Laundry equipment (7 x washing machine, 7 x dry machine)

# Laterine Container

Part No: SDS03



GRUPPO CAVALIERI SRL



## General Description

The flat-pack containers will be produced as high quality and fast erected modular units through advanced solutions and technologies with total quality concept based on unlimited customer satisfaction; unlimited support services at every level. All modules will have a minimum life expectancy of 25 years.



The architectural and structural design of the containers are carried by our expert Technical Staff, by using Autocad and SAP 2000 drawing and structural analysis programs.

Electrical, mechanical, plumbing and thermal performance design and material / equipment selection will be in accordance with Energy Efficiency Rules and Regulations.

Containers can be delivered as flat-pack type can obtain a greater rationalization of the transportation cost. It is reduced as a sandwich, made up from base and roof, wall panels, door and windows and accessories connected by suitable metallic spacers for a quick assembly on site.

As an advantage of their particular features, modules, which may be disassembled, carried and erected elsewhere several times, are the best to face emergency conditions or situations requiring temporary solutions. Modules may also be coupled from larger and more equipped complexes.

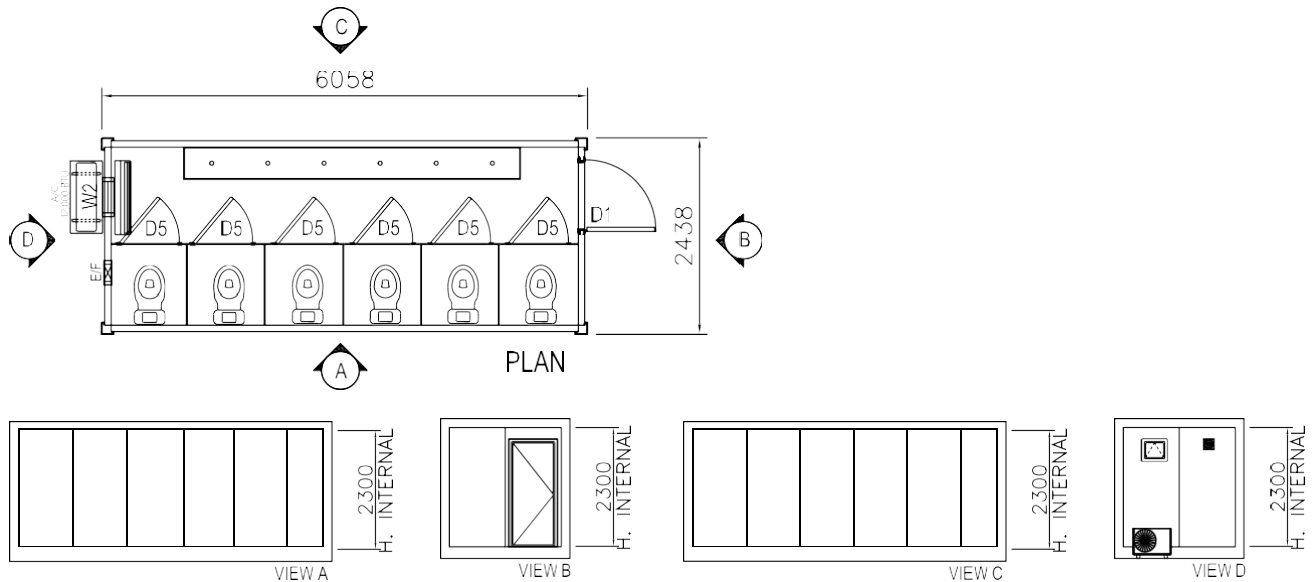
Materials used will be suitable for use in extreme weather conditions, including high humidity; great seasonal and diurnal temperature variations and large volumes of wind drive sand.

# Laterine Container

Part No: SDS03



GRUPPO CAVALIERI SRL



## Technical Specifications:

- 20 ft Latrine Container
- Product operation manual, product safety manual and product maintenance manual
- Fire rated external walls
- Compact laminated separation panels
- Painted and galvanized steel chassis, roof and structural columns
- Energy efficiency insulation for roof, walls and chassis
- Anti-slip PVC floor covering
- Painted and galvanized insulated steel door
- Windows with High Energy Saving Performance Glass
- Electrical Installation Materials IEC Standard (2 x LED Lights, 1 x Bulb Light, 1 x Switch)
- Battery operated smoke and CO (carbon monoxide) detectors
- Cooling 12.000 Btu Air Conditioner
- Heating 2.500 W electrical wall heater
- Acrylic washbasin single piece
- European type toilet 6 nos
- Exhaust Fan

# Shower Container

Part No: SDS04



GRUPPO CAVALIERI SRL



## General Description

The flat-pack containers will be produced as high quality and fast erected modular units through advanced solutions and technologies with total quality concept based on unlimited customer satisfaction; unlimited support services at every level. All modules will have a minimum life expectancy of 25 years.



The architectural and structural design of the containers are carried by our expert Technical Staff, by using Autocad and SAP 2000 drawing and structural analysis programs.

Electrical, mechanical, plumbing and thermal performance design and material / equipment selection will be in accordance with Energy Efficiency Rules and Regulations.

Containers can be delivered as flat-pack type can obtain a greater rationalization of the transportation cost. It is reduced as a sandwich, made up from base and roof, wall panels, door and windows and accessories connected by suitable metallic spacers for a quick assembly on site.

As an advantage of their particular features, modules, which may be disassembled, carried and erected elsewhere several times, are the best to face emergency conditions or situations requiring temporary solutions. Modules may also be coupled from larger and more equipped complexes.

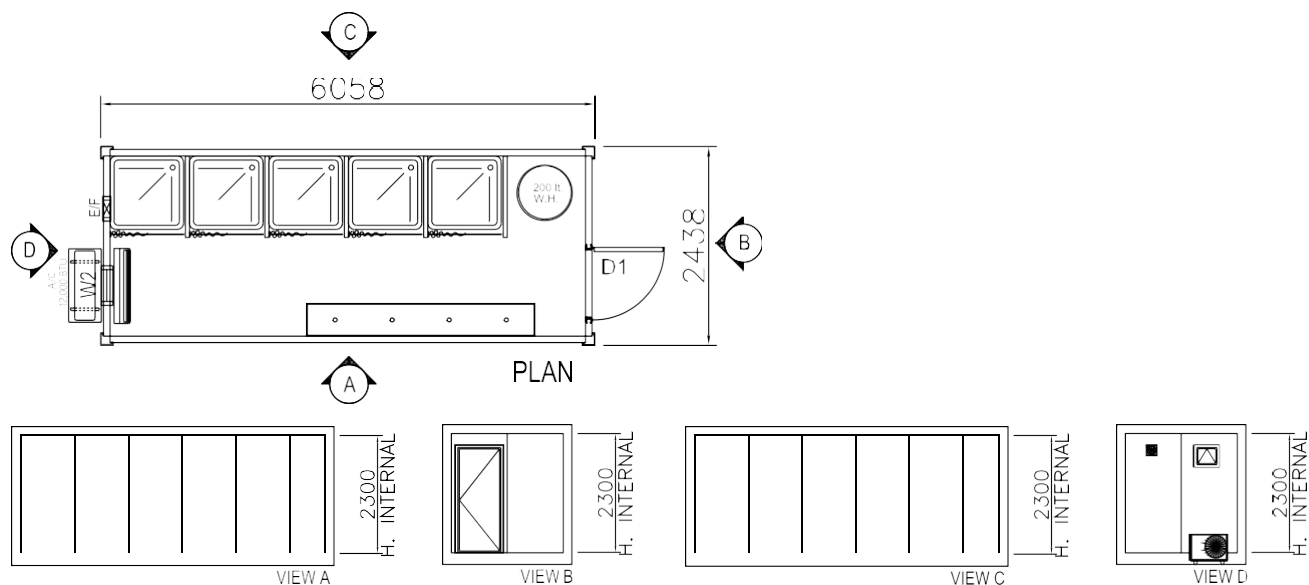
Materials used will be suitable for use in extreme weather conditions, including high humidity; great seasonal and diurnal temperature variations and large volumes of wind drive sand.

# Shower Container

Part No: SDS04



GRUPPO CAVALIERI SRL



## Technical Specifications:

- 20 ft Shower Container
- Product operation manual, product safety manual and product maintenance manual
- Fire rated external walls
- Separation panels
- Painted and galvanized steel chassis, roof and structural columns
- Energy efficiency insulation for roof, walls and chassis
- Anti-slip PVC floor covering
- Painted and galvanized insulated steel door
- Windows with High Energy Saving Performance Glass
- Electrical Installation Materials IEC Standard (2 x LED Lights, 1 x Bulb Light, 1 x Switch)
- Battery operated smoke and CO (carbon monoxide) detectors
- Cooling 12.000 Btu Air Conditioner
- Heating 2.500 W electrical wall heater
- Acrylic washbasin single piece
- Shower acrylic with curtain 5 nos
- Electrical water heater
- Exhaust Fan

**GRUPPO CAVALIERI**

Via Domenica Rosetti 8 Trieste / Italia

[www.gruppocavalierisrl.com](http://www.gruppocavalierisrl.com)

[info@gruppocavalierisrl.com](mailto:info@gruppocavalierisrl.com)

+39 350 989 7734